



**LONDON
PARADE**

**LONDON
PARADE**

INFORMATION

All the information you need
for taking part in the London
Parade and Festival





CONTENTS

London Parade & Festival	3
Destination Events – About Us	4
The Gala Concert Series	5
The Parade	6
Passports & Visas	7
Getting you to London	8
Transporting your Instruments & Equipment to London	9
Accommodation	10
Meals	11
Signhtseeing in and around London	12
Visitor Oyster Card	16
Exclusive Audio Guided Walks	17
New Year’s Eve	19
Unique Service	20
Important Extras	22
Security & Peace of Mind	23
Where do you go from here	24



LONDON PARADE & FESTIVAL

'The Greatest Event in the Greatest City in the World'

- ★ London's most important New Year Event – now in its fourth decade.
- ★ A week long celebration of music, in a concert series performed in London's finest music venues.
- ★ The greatest New Year's Parade featuring:
 - over 8,000 performers drawn from over 27 countries around the world.
 - more than 500 thousand spectators on the historic and spectacular parade route.
 - three hundred million TV viewers worldwide.

“ The parade is a marvellous opportunity for London to celebrate by showing off the diversity, the creativity and the inspiration which abound in this great city ...

Steve Summers, Chairman of the London's Mayor's Association



DESTINATION events ABOUT US

Destination Events – the founder and owner of London Parade – is one of Europe’s foremost event organisers.

Destination Events boasts a supremely accomplished, experienced and dedicated team of staff. They are expert, not only in the production of world class events, but also in the delivery of superb hospitality arrangements and educational touring experiences for performers in their events.

The Destination Events team have to be good – their prime sponsors are The Lord Lieutenantcy of Greater London and the London Mayors’ Association. The sponsors need their city to be shown with excellence. That’s what Destination Events do.

Meet key team members by visiting the [Destination Events](#) website.

Destination Events has found a worthy partner in the Youth Music of the World organisation. With a dedicated team of experts and consultants, Youth Music source groups who are worthy to be considered for invitation to London Parade.

Once a group has been accepted for invitation by Destination Events and the Parade’s patrons and sponsors, Youth Music then develops a unique performance tour to make it possible for the group to participate in London Parade and Festival.

Meet key members of the Youth Music team by visiting the [Youth Music](#) website.



LONDON PARADE CONCERT SERIES

The New Year Festival Concert Series features spectacular performances in some of London's finest music venues.

All types of musical ensemble are welcome – Symphony Orchestras, String Orchestras, Concert Bands, Wind Ensembles, Big Bands, Jazz Bands and Brass Bands. We have the perfect venue for your performance and an enthusiastic local audience waiting to applaud you.

Our superb venues include:

- ★ [Cadogan Hall](#)
click to take a look.
- ★ [St John's Smith Square](#)
click to take a look.
- ★ [St John's Waterloo](#)
click to take a look.
- ★ [Holy Trinity Church](#)
click to take a look.

Technical rehearsal, full professional stage management and promotion of all concerts in the series is provided, as are tickets for the best seats in the auditorium for all non-performing members of any group or ensemble.

Take a look at some
recent concerts






THE PARADE


The Parade on January 1st is the central point of the week long Festival. More than 500 thousand people throng the historic streets of Westminster – the heart of London, from 1pm until 4.30pm, to view the spectacle as it makes its way past:

- ★ The Ritz Hotel – Piccadilly.
- ★ Piccadilly Circus – heart of West End Theatre.
- ★ Trafalgar Square – Nelson’s Column, National Gallery.
- ★ Whitehall, Horseguards Parade, Banqueting House, Downing Street.
- ★ To the TV Finale performance arena and then on to Parliament Square with the Houses of Parliament, Big Ben and Westminster Abbey.

★ Watch this short video presentation of London Parade. 

★ Listen to the experiences of previous participants in London Parade. 

★ London Parade generates an incredible amount of global media. 

★ Dan Kirkby, Communications Director of London Parade, explains the global media interest in London Parade. 

PASSPORTS & VISAS

Before embarking on an international flight to Europe you must have a valid passport. The passport should have an expiry date of at least six months after the date you return to the United States. If you need to secure a passport for the first time, please ensure that you do so as soon as possible, allowing a minimum of eight weeks.

Holders of full USA passports (American Citizens) do not need a visa to enter the United Kingdom.

Holders of non-USA passports may need a visa to enter the United Kingdom. Full information of which passport holders need visas are available on the UK Government Foreign Office website. The same website will tell you where and how to apply for your visa. [Click here](#) to visit the website.

On occasion, to secure a visa, you will need a letter from Destination Events to confirm that you are a member of a performing group in the event and that you will be entering and leaving the UK on specific dates and accommodation is provided for you whilst you are here. Destination Events can supply such a letter, but need a minimum of 10 days notice. Some visa applications can take several months. If you do not have or are not eligible to have a full US passport, you need to check if you require a visa and fill in your application as early as possible.

Non-American Citizens staying in the USA on a Green Card should also check with the Department of Homeland Security to ensure that they will be able to re-enter the USA without difficulty after their visit overseas. [Click here](#) to visit the website.

We are committed to help any group members who need assistance in the visa process.

Newly issued passports are machine readable and thus once you arrive in London, you are able to gain expedited entry through the ePassport gates at border control. This option is only available to those over 12 years old, thus those younger must see a border control officer and have their passport stamped.



GETTING YOU TO LONDON



Check out our airlines:

[British Airways](#)

[American Airlines](#)

[Delta Air Lines](#)

[Virgin Atlantic](#)

[United](#)

Youth Music's staff and consultants at Performance Travel (PTL) are experts in arranging air travel from the USA to London for groups invited to perform in London Parade*.

It is a complicated business arranging air travel for what are often very large groups. PTL work tirelessly to secure the best blocks of seats with the best airlines and the most convenient schedules for performing groups.

Preferred carriers are British Airways, American Airlines, Delta Air Lines, Virgin Atlantic and United.

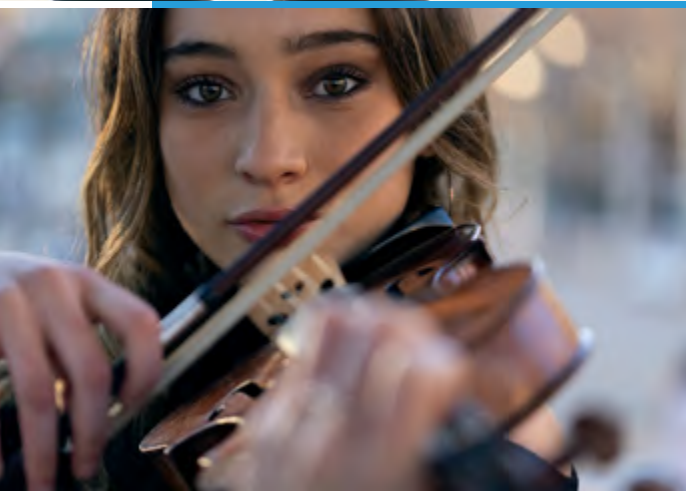
Flights to London are always 'overnight' and range in length from just six hours, if you are travelling from Boston, to 11 hours if you are travelling from Southern California. We always try to book you on direct non-stop services, but of course not all cities in the USA offer this service to London. We do try to take you from your nearest major airport and fly you to London with no more than one connection.

London is on GMT (Greenwich Mean Time) over the new year period. GMT is five hours ahead of Eastern, six ahead of Central, seven ahead of Mountain Time and a whopping eight hours ahead of Pacific Time. This means if you leave the East coast in the early evening you arrive in London early in the morning on the following day. Flying from the West coast, if you depart late afternoon, it is close to lunchtime the next day when you land in London.

The service on all airlines in coach (economy) is much the same. You receive a free main meal and drinks soon after take off and maybe a small snack meal before landing. All flights booked by PTL allow you one item of checked luggage and one 'carry on' as well – the sizes and weights allowed vary airline to airline. All airlines booked by PTL offer a good range of in-flight entertainment.

We deal with the transportation of instruments and musical equipment in a very special and super convenient way.

*Using the services of PTL to book your flights is not obligatory, but is recommended.



TRANSPORTING YOUR INSTRUMENTS & EQUIPMENT TO LONDON

One of the most beneficial and appreciated elements included in the Destination Events portfolio and provided as part of the Youth Music programme to London Parade, is the hassle free way that musical instruments and equipment are transported to London and back to the USA.

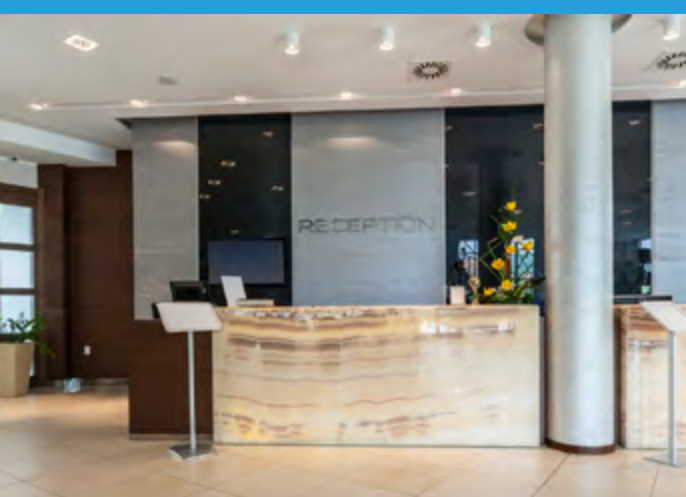
- ★ Larger instruments* and essential equipment** are collected from your home base in the USA (school, college, university, or rehearsal centre) 15 working days before your departure and air freighted to London.
- ★ Everything is delivered to your hotel in London just before you arrive and is placed in a secure storage facility exclusive to your group.
- ★ When all performances are complete, your consignment will be collected from your hotel and air freighted back to the USA and delivered to your home base 15 working days after your return from London.

What do you have to do?

- ★ Complete a detailed and precise 'equipment and instrument' manifest from our template.
- ★ Ensure you have hard/durable cases and boxes for your consignment.
- ★ Pack and label your consignment accordingly.

* Smaller instruments - piccolos, flutes and trumpets - as well as uniforms, should be taken by individual performers in their checked luggage or as hand luggage.

** For concert performers we provide timpani, a limited number of pit instruments, string basses etc. without charge and so these items do not need to be transhipped.



ACCOMMODATION

It is really important to event organisers that every performer in the event has a great place to stay.

The hotels used are very carefully selected and regularly checked by London Parade staff to ensure that their standards are maintained.

All hotels used are categorised as superior first class. Standards of decor, furnishing and housekeeping are always high.

- ★ Most participants are accommodated two per room (two beds or one Queen or King bed). Most hotels can offer limited numbers of three bedded rooms.
- ★ All bedrooms have private bathrooms, some with tubs and showers and some with walk in showers only.
- ★ All rooms have flat screen TV's, direct dial phones and hair dryers.
- ★ All hotels offer complimentary WiFi.
- ★ Some rooms may have mini fridges (minibar destocked).
- ★ All hotels offer irons and ironing boards – mostly in every room.
- ★ All hotels offer meeting room facilities to our groups and most offer rehearsal facilities.
- ★ All hotels provide locked and secure rooms for the storage of musical instruments and equipment.

Take a look at some of the hotels in our portfolio:

[Copthorne Tara Hotel Kensington](#)

[DoubleTree by Hilton Hotel – Tower of London](#)

[Hilton Kensington](#)

[Hilton Olympia](#)

[Holiday Inn Kensington High Street](#)

[Holiday Inn Bloomsbury](#)

[Holiday Inn Regents Park](#)

[Park Plaza Waterloo](#)



MEALS

The London New Year's Day programme makes sure that participants don't go hungry.

Breakfast is included every day*. A special buffet breakfast is offered to all groups in their hotel. Juices, fresh fruit, yogurt, bread and pastries, ham and cold meats, cheeses, plus always at least two hot items – eggs and either bacon or sausage. Hot drinks will include coffee, hot chocolate and hot teas.

Dinner is included every day. For some days this is a prearranged buffet or plated meal served in a private room at the hotel. On other days we provide every individual with a special dine around pre-paid card, usable in all restaurants, cafes, fast food outlets and grocery stores in London. With the city now widely acknowledged as the culinary capital of the world, with more ethnic dining opportunities available than in any other place, the Ticket Restaurant Card is the perfect way to explore some of London's great restaurants in smaller chaperone groups.

A much appreciated addition to the food offering is a special sack lunch provided in the assembly area for all who take part in the parade on New Year's Day. This lunch consists of a gourmet sandwich, a variety of snacks and bottled water. Gluten free and vegan options are available.

On all other days we don't provide lunch. A good fast food lunch can be bought for around £5.00 – £7.00 (\$5.50 – \$7.50) or a sandwich lunch can be purchased for around £4.00 – £6.00 (\$3.00 – \$5.50).

* Breakfast is not included in the hotel on the day of arrival. There will have been an offering of a very light breakfast or snack on the plane before it lands. Breakfast is included at the hotel on the day of departure.



SIGHTSEEING IN AND AROUND LONDON

It is very important to us and to our patrons, sponsors and supporters that all London Parade participants get a fantastic impression of London during their time here.

We start by securing great hotels, sourcing quality meals and, of course, providing the greatest stages in the world on which to perform.

Then our brilliant team of vastly experienced itinerary planners and hosts come into play to create and deliver a stunning collection of tours, visits and opportunities that give, in a short time, a terrific overview and introduction to our long history, our rich culture and our diverse and welcoming population.

There are a wonderful array of motor coach tours with the best and most interesting guides in any city in the world. Our coaches are all 'state of the art' modern touring vehicles (never call them buses – at least in the drivers' earshot!) with panoramic windows. Our coach operator carries \$15 million of liability insurance so you are always safe and protected whilst you are on board.

Meet Stuart Cannon, our chief guide, who will tell you a little about his special Blue Badge qualification and about some of the tours that we provide for you.





SIGHTSEEING IN AND AROUND LONDON, CONTINUED

A half day panoramic sightseeing tour of the West End and the City of London. The ideal introduction to our great City. See the Houses of Parliament with the Clock Tower that holds the bell of Big Ben, Buckingham Palace, Westminster Abbey, Whitehall, Downing Street, Trafalgar Square, Piccadilly Circus and 'Theatreland' along Shaftesbury Avenue. Look in to Chinatown and Soho, see St. Paul's Cathedral, The Bank of England, Mansion House and The Tower of London. All the time you will be entertained and informed by one of our specially selected guides.

A half day tour including a panoramic boat trip on the River Thames and a visit to The Tower of London. The River Thames that flows through the heart of London is the reason that our great capital city is built where it is. From your vantage point on your private cruiser, your guide will bring the long history of the city alive. You will see many iconic landmarks along the way, including the Palace of Westminster and London Eye. The Tower of London has served as a royal palace, fortress, prison, place of execution, mint, menagerie and jewel house during its 900 year history. Attractions in the Tower include the Bloody Tower, Traitors Gate, the Chapel of St. John and the Jewel House where the Crown Jewels of England are on show.



A full day tour of [Windsor](#) and [Windsor Castle](#). Twenty five miles to the west of London lies Windsor, whose 11th century castle is the seat and primary home of the British Royal family. Visit the castle with its State Apartments and Royal Chapel – the burial place of many of our monarchs. Spend time in the delightful town and look out at the vista of Britain's most famous public (private) school, Eton College – alma mater to so many British Prime Ministers and Royal Princes.

SIGHTSEEING IN AND AROUND LONDON, CONTINUED



A full day tour of [Hampton Court Palace](#). This superb Tudor Palace located on the banks of the Thames was originally built by Henry VIII's Chancellor, Cardinal Thomas Wolsey. Wolsey fell from favour – not least because he had built himself a Palace better than the king's and so Henry requisitioned it and it became a Royal Palace, which it remains to this day. A visit to the Palace includes entrance to the State Apartments with their magnificent art collections, a tour of the splendidly restored Tudor kitchens (Henry and his court were notorious for their gluttony), a look at the earliest Real (Royal) Tennis Court and the chance to lose yourselves in the famous maze.



A full day tour of [Oxford](#). Oxford is home to the oldest university in the English speaking world. On this tour you will visit one of the historic colleges that make up the [University of Oxford](#). The buildings that house the colleges are simply superb and full of history. The City is an interesting mix of 'town and gown' with the academics and scholars of the university representing 'gown' and the thousands of skilled workers associated with the BMW Mini plant representing much of the 'town'. It is always great fun to look out for the sites and scenes used in the famous movies such as Doctor Strange, the Harry Potter series, Young Sherlock, the X-Men series and many others, which were all set in and around Oxford.



SIGHTSEEING IN AND AROUND LONDON, CONTINUED

Every programme includes four out of these five special tours/visits. London Panoramic, The Tower and Windsor we think are best included for all. Then you should choose between Hampton Court and Oxford for your fourth visit.

For those who have taken part previously in London Parade and have been offered a subsequent invitation we have alternative tours/visits to offer. Remember though, that whilst it might be a director's second or third time around (or maybe more), it should always be borne in mind that usually group members just get one bite of the cherry. Thus we recommend choosing from the above.



VISITOR OYSTER CARD



This is your passport to London. A terrific prepaid travel card for all of London's excellent public transport systems.

The card can be used on:

- ★ The London Underground (Tube)
- ★ London Buses – all those famous red double deckers and more besides
- ★ The London 'Overground' Railway System (within certain limits)
- ★ The Docklands Light Railway
- ★ The Emirates Air Line Cable Car

It's so easy to use your Oyster Card. Touch on and off at tube, DLR and overground station barriers. Touch in when you get on a bus – no need when you get off.

If you look like you are running out of credit simply top up your card at any station – quick easy and simple.

Find out all about the [Oyster Card](#).





EXCLUSIVE AUDIO GUIDED WALKS

London is one of the greatest ‘walking’ cities in the world. At the heart of London, in the City of Westminster, in the ‘Square Mile’ City of London and in the historic boroughs of Southwark, Tower Hamlets and Lambeth there is something unique, arresting and fascinating around just about every corner, in every nook and cranny and in every historic narrow alley way and mews.

Destination Events think it’s really important to show its special visitors the very best that London has to offer and to give a perspective of the city that can really only be achieved on foot.

So we commissioned the very best. We asked the famous radio actor and historian Tyler Butterworth if he would write and perform for us a series of unique walks showing the very best and most interesting parts of London to our performers and visitors.

All of Tyler’s walks, produced exclusively for the London Parade, are presented as downloadable files straight to your smartphone or electronic device and are accompanied by printed material to assist you. These walking tours are a fabulous educational tool and should make the London Parade programme worthy of a history credit!

You will receive a total of three separate walks, which can be undertaken in your unstructured time if you so wish. They will be sent to you as MP3 files to download onto your electronic device before you arrive in London.

London

Welcome to London and your personal audio guide package. These walks are just like the audio guides you use in museums and galleries, but out on the street! Full of music and fascinating stories, they will unlock the secrets of the city around you. Have fun!

HOW TO USE OUR AUDIO GUIDES
It's easy, just use these maps, and the audio directions you'll hear at the end of each track, to guide you to the next stop. Never walk and listen to the audio at the same time. Pause your player before you walk. Keep your eyes open and be aware of your surroundings. That's it, have fun!

audiotraveler
"sensibly good guides"

Parade Route

Directions

- 1. Walk**
Directions to Start: You are at Green Park underground station. Follow exit signs for Piccadilly Northside. On street level turn left. Walk along Piccadilly. Turn left into Berkeley Street. Walk up to Berkeley Square, turn left at the square, and stop outside the big office block with flagpoles on the other side of the street.
- 2. Welbeck**
Directions: Berkeley Square – stay where you are!
- 3. Fortnum and Mason**
Directions: Face the Fitz hotel across the road. Turn left and walk along the Parade Row until you see the store Fortnum and Mason on the other side of the street.
- 4. Piccadilly Circus**
Directions: Use the pedestrian crossing here at Fortnum and cross the road towards the store, then turn left and continue along Piccadilly towards Piccadilly Circus. At the far end of the street you will see the Bank on your right.
- 5. Trafalgar Square**
Directions: Walk along Pall Mall, away from the Abraham Club. Pall Mall becomes Cockspur St. Follow it straight until you come to a pedestrian crossing on your left which will take you in to the familiar open square and fountains of Trafalgar Square. Stand by Nelson's Column.
- 6. Horse Guards**
Directions: Walk back across the road, the way you came. Turn left on the far side. Follow the sidewalk, using many pedestrian crossings, towards Downing Street. Go into and onto the road called Whitehall. Walk until you reach the National Parliament at Horse Guards. Stand where you can see them.
- 7. Downing Street**
Directions: Walk on down the road called Whitehall to a set of black railings on your right, guarded by armed police. That's Downing Street.

Southbank Stroll Markets, Music and Shakespeare

Directions to Start: Go to the London Underground station at Southwark. Walk along the riverbank, following the signs for St Paul's Cathedral.

- 1. Southwark Cathedral**
Directions: Keep the river on your left and walk to the first bridge, Waterloo Bridge. Stop there.
- 2. The London Bridge**
Directions: Walk along the riverbank, following the signs for St Paul's Cathedral.
- 3. The London Bridge**
Directions: Walk along the riverbank, following the signs for St Paul's Cathedral.
- 4. The London Bridge**
Directions: Walk along the riverbank, following the signs for St Paul's Cathedral.

ESSENTIAL INFORMATION

- NEAREST TUBE: Cannon Street
- EXIT SIGN: Exit to the right
- START POINT: Cannon Street
- WALK TIME: 30 minutes
- Bridge Market opening hours: Wednesday - Friday, 10am - 5pm



EXCLUSIVE AUDIO GUIDED WALKS, CONTINUED

Get a taste of each walk by clicking on the links below:

- ★ **London Parade Route** – learn about the history and all of the stories behind this iconic parade route. The next time you experience it, you will be marching in front of many thousands of cheering spectators.
- ★ **The South Bank Stroll** – a walk from the London Eye to Southwark Cathedral and Borough Market. Historic Southwark to 21st century Southwark in one walk.
- ★ **London, Rock & Roll Capital of the World** – exploring the history of the Swinging Sixties, Glam Rock, Punk Rock, Brit Pop and much more.





new year's eve

It's time to party – but not till too late as you'll be taking part in the greatest show on earth the following day – and there may well be an early morning call for performers in the London Parade!

But we do throw a great party to welcome in the New Year.

- ★ **A private room is reserved for you and all the other groups of performers staying in your hotel.**
- ★ **The room will be prepared for the party by your tour assistant.**
- ★ **We provide glow bands, balloons and party poppers to help the evening go with a bang!**
- ★ **A top rated DJ and light show will be provided with a terrific playlist of just about anything you can think of.**
- ★ **We provide pizza and sodas to boost the calories you shed with the dancing.**
- ★ **All parties are secure, free of alcohol, and exclusive to London Parade performers.**



UNIQUE SERVICE

We have been doing this a long time and have developed what we consider to be the very best team of professionals to ensure that your programme in the UK, to take part in the London Parade, is as wonderful as it can possibly be.

A little earlier we looked at the great DEL team who organise London Parade and your London hospitality arrangements. If you want to refresh your memory just [click here](#).

Likewise you are in really good hands with the Youth Music/Performance Travel teams in the USA and UK. Again, if you want a reminder of who they all are just [click here](#).

So you have great people taking care of you but what else makes our service so special?

- ★ **Our Group Organiser's Guide.** An absolutely invaluable manual detailing out every step of the way how we need you to prepare for your groups participation in the London Parade. This guide is delivered to you electronically in the early part of the year that you travel. Regular updates are sent as modifications and improvements are made.
- ★ **Site inspection.** It is imperative that every group is represented by its leader/s on a site inspection programme in London. On this site inspection there are a series of seminars, meetings, venue tours, parade route walks and hotel tours that prepare you for leading your group at the end of the year.
- ★ **Virtual site inspection.** After site inspection we provide you with a copy of a digital presentation covering everything that has been





UNIQUE SERVICE, CONTINUED

discussed and shown to you in London, but in a way that can be presented to your group.

- ★ The ace up our sleeve is our team of Tour Assistants. Each group will be allocated one. Your tour assistant will have been carefully trained and will be an ever present resource of organisation, information and friendship whilst you are in London – ‘24/7’, from the moment you arrive until the time you leave. We will make our staff allocation in November and have your tour assistant contact you in December to introduce him or herself and see what they can do to help you in your last minute preparations. Our tour assistants are terrific people, all with a deep knowledge and passion for London and the London Parade.



IMPORTANT EXTRAS

For performers:

- ★ All performers in the London Parade are presented with a specially struck medal to acknowledge their contribution to the greatest event in the greatest city in the world. You can only receive a medal if you take part – they are highly sought after.
- ★ Every performer will receive a digital version of the group photo taken either on New Year's Day or at a gala concert.

For non performers:

The London Parade truly welcomes family members, friends, alumni and supporters of all performing groups and offers them the same arrangements as for performers. So we are delighted to offer the following to all categories of non-performers in every group as a little extra.

- ★ A complimentary ticket to each and every concert that their group performs in.
- ★ Priority access to the highly sought after London Parade grandstand tickets. Tickets go on sale to the general public on 1st July each year and sell out within hours, but seats will be held for non-performing members of overseas performing groups until the 10th October, provided the tickets are ordered as a group through the London Parade office. Payment will be through Youth Music as a supplement to the group billing. Grandstand tickets ordered after 10th October cannot be guaranteed.



SECURITY & PEACE OF MIND

A comprehensive travel insurance policy is included for everyone on the performance tour programme to the London Parade.

Coverage includes:

- ★ cancellation for specific reasons.
- ★ medical and emergency expenses.
- ★ personal accident.
- ★ baggage.
- ★ delayed baggage.
- ★ musical instruments.
- ★ rental or replacement musical instrument.

This protects the vast majority of the performance tour cost, should you be forced to cancel for a significant number of reasons.



COMPREHENSIVE TRAVEL INSURANCE POLICY



EVIDENCE OF INSURANCE

effected with
certain UNDERWRITERS AT LLOYD'S, LONDON
for DESTINATION EVENTS LIMITED
on behalf of Insured Persons being American students and adults
and members of the Youth Music of the World Performers Club
whose names are on file with B.D.R. Ltd., 40 Lane Street, London EC3M 7AW

This document is to notify the Member named below (the "person") that the following insurance has been effected with certain Underwriters at Lloyd's, London (not incorporated) (the "Underwriters") for the Period of Coverage specified below under the Contract number 990900716 specified below (the "Contract") issued to Destination Events Limited, in respect of each event.

The New Year's Day Parade and Festival - London, The London International Choral Festival, La Grande Parade de Paris Champs Elysée and the Rosne Festival, from 16th December 2016 to 7th January 2017.

Any other events organised by the trading name Youth Music of the World - Destination Events Limited during the period 2016-2017.

The insurance is provided under the Contract number 990900716 and is in accordance with the terms of the Contract number 990900716, details of which are contained herein.

The original Evidence of Insurance and Contract number 990900716 may be inspected at the offices of Destination Events Limited.

The respective names of, and proportions underwritten by, the Underwriters can be ascertained from the office of Destination Events Limited:-

Destination Events Limited
1 Tinskhams Green, Terrace Meads
Chewick, London W4 1QU, UK

THIS DOCUMENT (EVIDENCE OF INSURANCE) IS ISSUED AS NOTICE OF INSURANCE FOR INFORMATION ONLY. IT DOES NOT CONSTITUTE A LEGAL CONTRACT OF INSURANCE. THE CONTRACT NUMBER 990900716 AND THE APPLICATIONS OF THE INSURED PERSONS FORM THE ENTIRE CONTRACT. THIS EVIDENCE IS FURNISHED IN ACCORDANCE WITH, AND IN ALL RESPECTS IS SUBJECT TO, THE TERMS OF THE CONTRACT NUMBER 990900716, REPLACES ANY OTHER EVIDENCE PREVIOUSLY ISSUED COVERING THE INSURANCE DESCRIBED HEREIN.

CONTRACT NUMBER 990900716



WHERE DO YOU GO FROM HERE?

Youth Music's (YM) Directors of International Participation, along with their consultants, are constantly scouring the Americas for groups we would like to invite to take part in the London Parade and the Festival.

If you are contacted by a member of the YM team and are interested in going a step further, then Youth Music will ask the London Parade team to put your name before the steering committee for approval. If you secure this approval, the London Parade will write to tell you that you have been accepted for invitation.

You will then enter into negotiations with YM, who will produce for you a document entitled 'Offer of Performance Tour'. This encapsulates your discussion with YM, listing out the dates that you would travel and the gateway you would travel from, the number of places we can offer you, an exact listing of performance, hospitality and educational touring features, a price and a payment schedule. The final page of this document requests that you secure signatures from all relevant parties that you may accept the offer.

Once accepted, the Offer Document is returned to Youth Music/Performance Travel, who then create a contract based on the contents of the offer. Once you have signed and returned the contract, you will then be contacted by London Parade to set up a date for the presentation of the official invitation. This will be undertaken during a visit to your group in the USA by one of the senior or principal patrons of London Parade. You are not deemed invited and the contract is invalidated, if you do not receive the official invitational visit.





**LONDON
PARADE**



Destination Events

No 1 Turnham Green Terrace Mews

Chiswick, London W4 1QU

Tel: +44(0)20 3275 0190

contact@londonparade.com

www.londonparade.com